

LTMA

移山填海 龙腾气派

LT958 装载机

WHEEL LOADER



厦门欣龙腾机械有限公司

XIAMEN XINLONGTENG MACHINERY CO., LTD.

LT958 轮式装载机

WHEEL LOADER

LTMA

性能参数及外观尺寸

Performance parameter and outer dimension

操作质量 Operating weight	17100 kg
额定荷载 Rated load	5000 kg
铲斗体积 Bucket capacity	3 m ³
发动机型号 Engine model	WEICHAH WD10G220E23
额定功率 Rated power	162KW
额定转速 Rated rotate speed	2000r/min
最大扭矩 Max. torque	≥745.3N.m
崛起力 Breakout force	145KN
行驶速度 Driving speed	
前进一档 Forward I	0-11.5km/h
前进二档 Forward II	0-38km/h
后退一档 Reverse I	0-16km/h
爬坡能力 Grade ability	28°
全长 Overall length	7950mm
全宽 Overall width	2870mm
全高 Overall height	3500mm
斗宽 Bucket width	3000mm
轴距 Wheel base	3300mm
轮距 Track base	2260mm
最小离地间隙 Min. ground clearance	470mm
最大卸载高度 Max. dumping height	3300mm
最大卸载距离 Max. dumping reach	1400mm
液力变矩器 Hydraulic Torque converter	单元四元件 Single stage, 4elements
变速箱 Transmission	行星式 Planet-type
提升时间 Raise time	≤6.8s
三项和 Total	≤12.5s
轮胎 Tire type	23.5-25

注：随着技术的进步，产品的结构、性能和参数将随之改进，恕不另行通知。
The specifications will be changed with the technology progress and without notice.

■ 液压系统：采用双泵合流技术，动力利用更充分，节能高效。独立传动油和液压油冷却装置让液压系统更稳定。

Hydraulic systems: To adopt confluence of dual-pump confluence and diffuence technology, rational use of engine power, reduce energy consumption effectively. Independent transmission oil and hydraulic oil cooling improve the hydraulic system stability.

■ 可靠的操作：17.1吨超大机重，7950mm全长，3300mm的超长轴距设计，适应各种恶劣环境，操作稳定，行业领先。

Reliable operation: 17.1 ton operation weight ensures that the machine could adapt to various tough condition. With the long wheelbase of 3300mm and long machine body of 7950mm, the machine is ahead in the industry in terms of the operation reliability.

■ 部分装置可选配，比如空调，暖气系统，先导，动臂加长等。

Optional spare parts chosen by users, such as the air conditioner, heat systems, joystick, longer arms and so on.

稳赢先机，创造财富

■ 安全：

四轮双管路钳盘式制动系统，后置储气罐，以保证更安全和可靠的操作。

Four wheel double-line caliper disc braking system with a gas container in the back to guarantee a more safety and reliable operation.



■ 发动机：

标配潍柴低转速柴油发动机，省油环保，动力强劲，可选配东风康明斯，上柴发动机等。

Powerful engine: Weichai low rated rotate speed Engine, strong power, energy conservation and environmental protection. Cummins engine, Shanghai engine is optional.



■ 维护更方便：

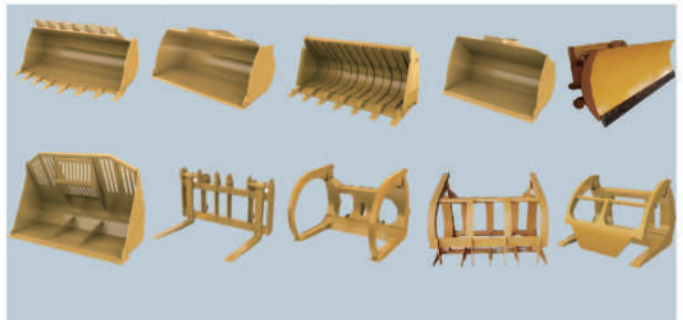
新型骨架结构发动机顶翻式大侧门，铰接处大空间设置，维护保养更方便。高强钢板焊制的铰接处、防尘板等设计让整车更持久，耐用。

Easy to maintain: New design of skeleton structure hood. Wide-opening hood Makes servicing & maintenance of engine easier. Large distance between up and down articulated boards creates large maintenance space. Exclusive dust-proof layer and sealed articulated points make the loader more durable.



快换：夹木夹，货叉，雪铲，抓草叉，加大铲斗等。

Quick hitch for special needs such as the log grapple, fork, snow blade, grass fork, enlarged bucket etc.



 厦门欣龙腾机械有限公司
XIAMEN XINLONGTENG MACHINERY CO., LTD.
厦门欣龙腾进出口有限公司
XIAMEN XINLONGTENG IMPORT&EXPORT CO., LTD.

<http://www.xltma.com>

公司地址：福建省厦门市海沧区海富路
Company Address: Haifu Road, Haicang district, Xiamen City, Fujian Province
工厂地址：漳州市龙海龙池台商开发区保生路（龙昆路）
Factory address: Baosheng Road (Long Kun Road), Longchi Taiwanese Development Zone, Longhai, Zhangzhou City
电话(Tel): 0086-592-6538306 传真(Fax): 0086-592-6538306
服务电话(Sale service): 0086-592-8271708
Mobile: 0086-18030244056 E-mail: LTMA@XLTMA.COM